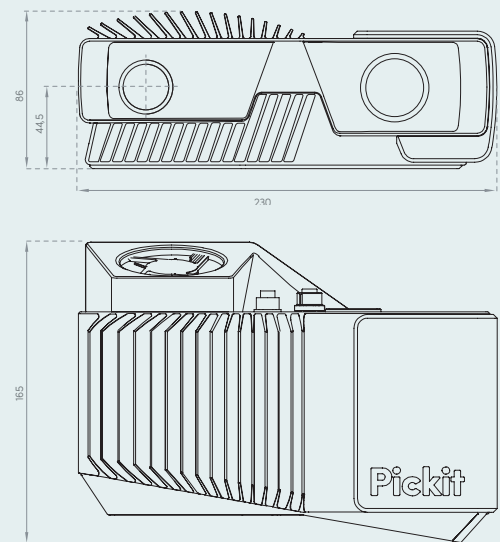
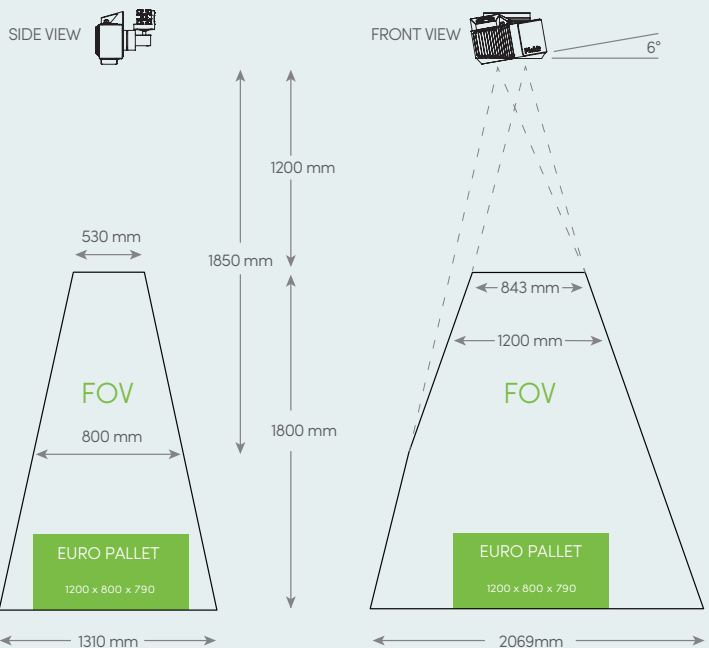
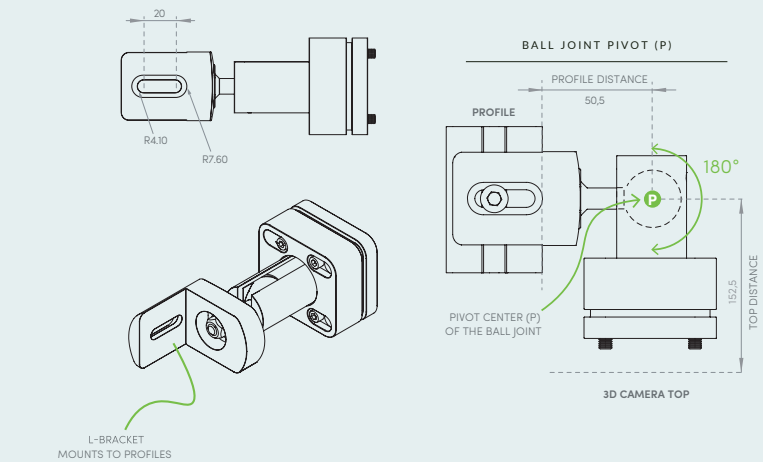
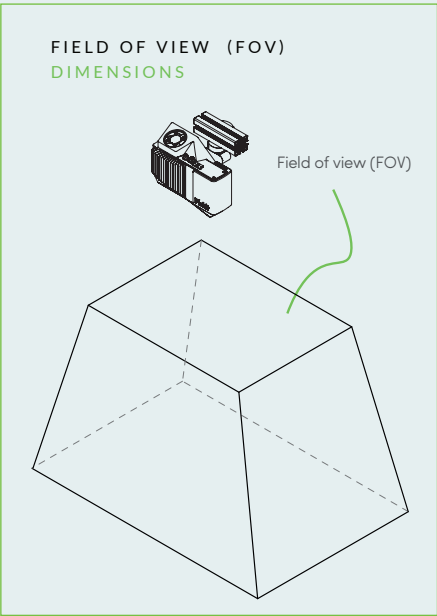


Pickit L-HD facts



Minimum object size:
50 x 50 x 10 mm



CAMERA TECHNICAL SPECIFICATIONS	
3D measurement method	Structured light
Image processing speed	10 Hz (100ms snapshots)
3D Camera accuracy	8mm
3D Camera repeatability	< 2.0mm
3D camera weight	2 kg
3D camera connection to PC	M12-8 (USB) - USB3
PC connection to robot	TCP/IP over Ethernet
Power supply	M12-5 24VDC
Temperature	10°C to 40°C
IP rating	IP65
Vibrations	5G Sinus, 25G Shock
Conforms to	CE, CB, EN6950, FCC class A



CAMERA CABLE TECHNICAL SPECIFICATIONS	
10m	
Industrial M12 camera connector	
High-Flex / Continuous-Flex	
<ul style="list-style-type: none">Type-U (R= 67,5mm - 5.000.000 times)Type-S (R= 60mm - 1.000.000 times)90° Tick-Tock bending (R= 60mm - 1.000.000 times)	
Type-U	Type-S
Moving Directions	Weight (400g)
Bending Radius	Weight (400g)
Cable	Weight (400g)
90° Tick-Tock bending	Weight (400g)



PROCESSOR	
Power consumption	
<ul style="list-style-type: none">While turned off: 25WBooting: 115WIdle: 70WHeavy processing: 160W	
Technical specifications	
<ul style="list-style-type: none">Processor: 6 cores (12 threads) at 3.7 Ghz19 inch server: rack compatible (2U)Temperature: -20°C to 70°CVibrations: Operating, 5 Grms, 5-500 Hz, 3 axesIP rating: IP54Power supply: 9-32V DC 160WHumidity: -95% @ 40°C (non-condensing)Weight: 11 kg	

USE PICKIT WITH THE ROBOT OF YOUR CHOICE

